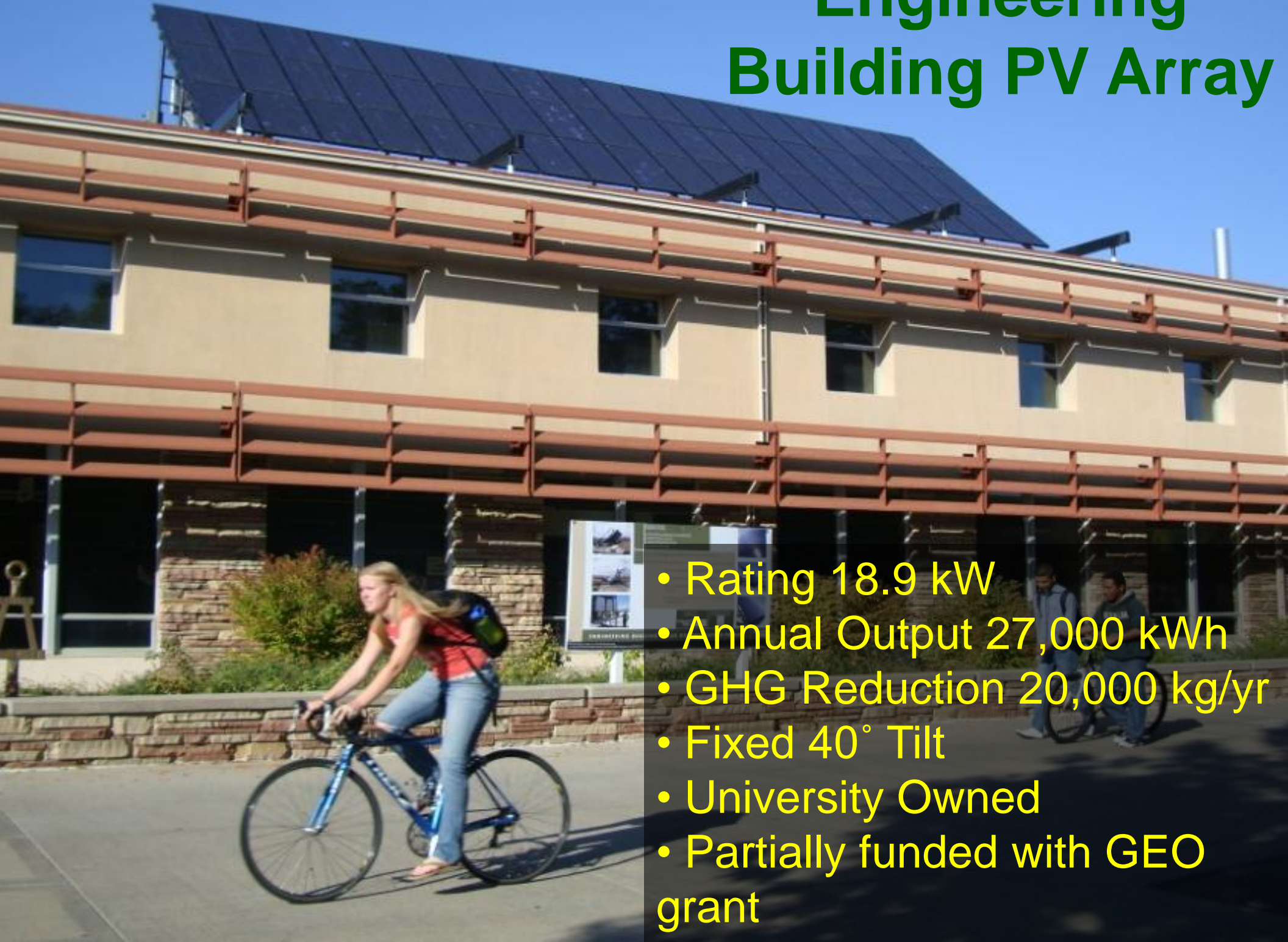


# Engineering Building PV Array



- Rating 18.9 kW
- Annual Output 27,000 kWh
- GHG Reduction 20,000 kg/yr
- Fixed 40° Tilt
- University Owned
- Partially funded with GEO grant



# Behavioral Sciences Building PV Array



- Rating 15.75 kW
- Annual Output 23,000 kWh
- GHG Reduction 17,000 kg/yr
- Fixed 40° Tilt
- University Owned





# Academic Village Thermal Plant PV Array



- Rating 12.6 kW
- Annual Output 18,000 kWh
- GHG Reduction 13,000 kg/yr
- Fixed 40° Tilt
- University Owned